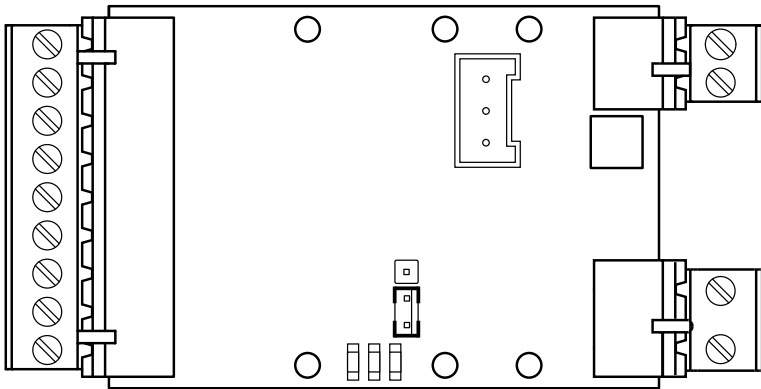


VA4 Manual



Content

Introduction	
Technical Data	2
General information	3
Introduction	4
Configuration	
Configuration	5
Installation	
Connections	6
Certificate	
Declaration of conformity	7

SafeLine VA4

Technical data

Current consumption at 24V:	max 15mA
Current consumption on activated input and playing sound at max volume:	max 70mA
Speakers:	10W, 8Ohm 3W, 8Ohm
Size:	99 x 50 x 17 mm

General information

This unit was built with state-of-the-art technology and to generally recognised safety related technical standards currently applicable. These installation instructions are to be followed by all people working with the unit, in both installation and maintenance.

It is extremely important that these installation instructions are made available at all times to the relevant technicians, engineers or servicing and maintenance personnel. The basis prerequisite for safe handling and trouble free operation of this system is a sound knowledge of the basic and special safety regulations concerning conveyor technology, and elevators in particular. The unit may only be used for its intended purpose. Note in particular that, no unauthorised changes or additions may be made inside the unit or individual components.

Exclusion of liability

The manufacturer is not liable with respect to the buyer of this product or to third parties for damage, loss, costs or work incurred as a result of accidents, misuse of the product, incorrect installation or illegal changes, repairs or additions. Claims under warranty are likewise excluded in such cases. The technical data is the latest available. The manufacturer accepts no liability arising from printing errors, mistakes or changes.

Declaration of conformity

Download "The declaration of conformity" at our website: www.safeline-group.com

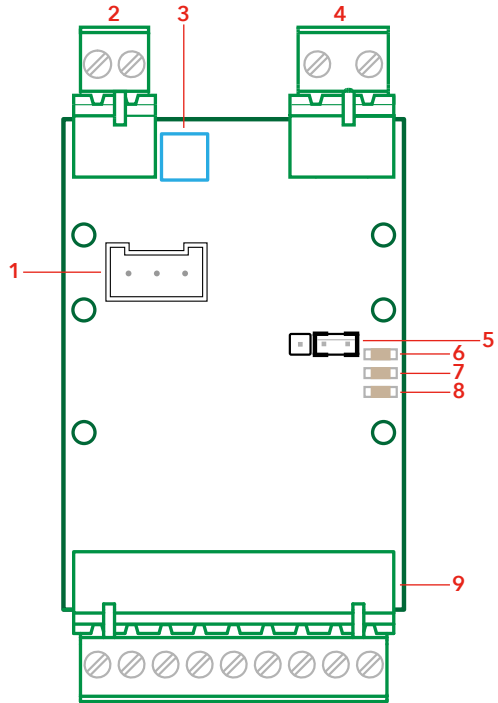
Safety Precautions!

- Only trained professionals, who are authorised to work on the equipment, should install and configure this product.
- This quality product is dedicated for the lift industry. It has been designed and manufactured to be used for its specified purpose only. If it is to be used for any other purpose, SafeLine must be contacted in advance.
- It should not be modified or altered in any way, and should only be installed and configured strictly following the procedures described in this manual.
- All applicable health and safety requirements and equipment standards should be considered and strictly adhered to when installing and configuring this product.
- After installation and configuration this product and the operation of the equipment should be fully tested to ensure correct operation before the equipment is returned to normal use.

Electrical and electronic products may contain materials, parts and units that can be dangerous for the environment and human health. Please inform yourself about the local rules and disposal collection system for electrical and electronic products. The correct disposal of your old product will help to prevent negative consequences for the environment and human health.



Introduction



1. Rs232 PC connection

For firmware update and programming.

2. Terminal for speaker

Recommended: Broad band speaker 4-16 Ohm, min 0.5 W.

3. Volume

Increase or decrease volume of the speaker.

4. Terminal for power supply

Connect 20-30 VDC power supply to the terminal.

5. Jumper for active 0 inputs.

Place the link on the jumper for active 0 inputs.

6. Rec LED

Red LED, flashes during communication with a PC.

7. Status LED

Yellow LED, flashes when a message/music is played.

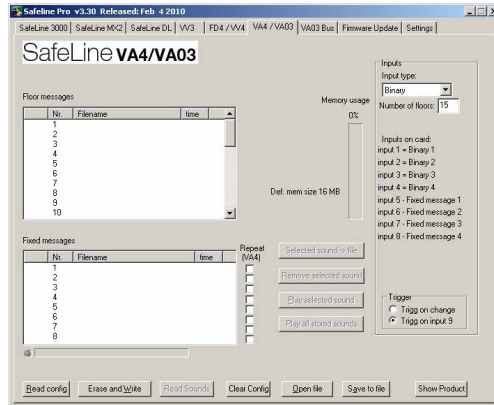
8. Power LED

Green LED, flashes when the unit is powered.

9. Terminal for inputs and trigg signal.

Configuration

Reconfiguration and changes to previously recorded messages can easily be made. SafeLine Pro can be downloaded for free on our web site: www.safeline-group.com.



When recording and downloading own sounds.

A sound file name can be no longer than 59 characters. The sound have to be in wav-format, mono with 16-bits resolution and 8 or 16 kHz sample frequency PCM. VA4 is normally delivered with 2048 KB Flash-memory this is enough for 240 sec of recording at 8 kHz or 120 sec in 16 kHz. Both 8 and 16 kHz sampled *.wav-files can be downloaded in the same VA4. If you have recordings in any other resolutions or format they have to be converted first.

Inputs:

Standard configuration at delivery is:
Input 1-4, are Binary inputs 1,2,4,8.

Input 5-8 are fixed messages that are used for all floors like "Doors are closing", "Lift is overloaded", "Fire alarm" etc.

Configuration:

The inputs can be configured with SafeLine Pro:

Binary / Decimal / Gray code inputs for maximum 1-32 floors.

Fixed messages 1-8 can be selected.

Trigg signal: Floor message can be played when a trig input is activated, or when one of the inputs status are changed. All changes and downloading of new messages have to be made from SafeLine Pro.

Polarity and voltage:

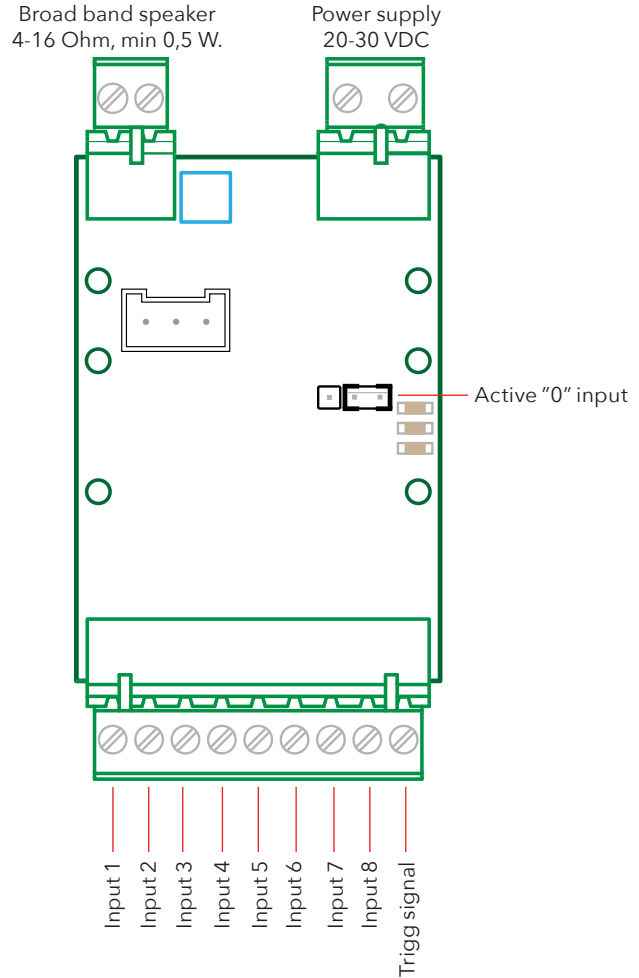
The input voltage can be between +20-30 VDC.

If "Active 0 input" is activated a 0 VDC signal activates the input. Supply voltage must be 20-30 VDC.

Connections

Input 1-8: Connections from controller.
Trigg: Connection from trigg signal.

Positive/Negative input signals:
The VA4 can be set for either positive or negative input signals. It is set for positive signals as default. To chose negative input signals, mount the jumper over 'ACTIVE "0" INPUT'.



EU Declaration of Conformity

Product: Voice announcer
Type / model: **VA4**
Article no: *VA4, *VA4-SD
Manufacturer: SafeLine Sweden AB
Year: 2017

We herewith declare under our sole responsibility as manufacturer that the products referred to above complies with the following EC Directives:

Directives

Electro Magnetic Compatibility:	2014/30/EU
RoHS 2:	2011/65/EU

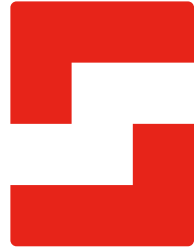
Standards applied

EN 12015:2014	EMC: Emission, Electromagnetic compatibility
EN 12016:2013	EMC/Lifts: Immunity, Electromagnetic compatibility
EN 50581:2012	RoHS: Technical doc. for assessment of restriction of RoHS.

Tyresö, 2017-04-07



Lars Gustafsson,
Technical Manager, R&D , SafeLine Group

**SafeLine Headquarters**

Antennvägen 10 · 135 48 Tyresö · Sweden
Tel.: +46 (0)8 447 79 32 · info@safeline.se
Support: +46 (0)8 448 73 90

SafeLine Denmark

Erhvervsvej 19 · 2600 Glostrup · Denmark
Tel.: +45 44 91 32 72 · info-dk@safeline.se

SafeLine Norway

Solbråveien 49 · 1383 Asker · Norway
Tel.: +47 94 14 14 49 · post@safeline.no

SafeLine Europe

Industrierrein 1-8 · 3290 Diest · Belgium
Tel.: +32 (0)13 664 662 · info@safeline.eu
Support: +32 (0)4 85 89 08 95

SafeLine Deutschland GmbH

Kurzgewannstraße 3 · D-68526 Ladenburg · Germany
Tel.: +49 (0) 6203 840 60 03 · sld@safeline.eu

SafeLine Group UK

Unit 47 · Acorn Industrial Park · Crayford ·
Kent · DA1 4AL · United Kingdom
Tel.: +44 (0) 1322 52 13 96 · info@safeline-group.uk

SafeLine is a registered trademark of SafeLine Sweden AB. All other trademarks, service marks, registered trademarks, or registered service marks are the property of their respective owners.